



**DORSET & WILTSHIRE  
FIRE AND RESCUE**

## **DORSET & WILTSHIRE FIRE & RESCUE SERVICE**

### **WILTSHIRE AREA BOARD REPORT**

#### **Community Safety Plan**

DWFRS Community Safety Plan can be found on the DWFRS website;  
<http://www.dwfire.org.uk/community-safety-plan/>

#### **Prevention**

We are committed to making a real difference to the lives of people in Dorset and Wiltshire. Our aim is to reduce the level of risk and harm to our communities from fire, targeting those most at risk. We do this primarily through our Safe and Well visits.

A Safe and Well visit is **FREE** and normally lasts about one hour covering topics such as:

- Using electricity safely
- Cooking safely
- Making an escape plan
- What to do if there is a fire
- Keeping children safe
- Good practice – night time routine and other points relevant to you
- Identifying and discussing any further support the occupier may need

Are you or anyone you know:-

- Over the age of 65?
- Need a smoke detector?
- Have a long-term health condition?
- Suffer from poor hearing or sight loss?
- Would you struggle to escape in the event of a fire?

If you can answer yes to more than one of these questions, then please call us on 0800 038 2323 or visit <https://www.dwfire.org.uk/safety/safe-and-well-visits/>



**DORSET & WILTSHIRE  
FIRE AND RESCUE**

## Protection

On-going interaction by Protection Team members with Local Authorities, Private landlords and tenants regarding fire safety-related matters: external cladding systems; fire detection and warning systems; fire resisting doors (& self-closers); combustibility/fire resistance of construction materials; commercial and residential sprinklers systems and water-mist suppression systems

### **General Enquiries**

If you have a general fire safety enquiry regarding commercial property, please email [fire.safety@dwfire.org.uk](mailto:fire.safety@dwfire.org.uk) and the Fire Safety Team will respond in office hours.

### **Fire Safety Complaint**

If you wish to tell us about fire safety risks in commercial premises, such as locked or blocked fire exits, you have three options:

- You can email the fire safety department at [enforcement@dwfire.org.uk](mailto:enforcement@dwfire.org.uk)
- Call 01722 69 1717 during office hours (9am-5pm).
- Call our Service Control Centre on 0306 799 0019 out of office hours (5pm-9am)

## On Call Recruitment

Have you always wondered if you could join the fire service, but haven't had the opportunity to find out more? Have you found yourself seeking your next challenge, keen to give back to the local community or wanting to learn new skills including leadership and teamwork? Then becoming an on-call firefighter is for you.

As a paid position, on-call firefighters commit anywhere between 40 to 120 hours per week, during which time they must be able to respond to the station immediately.

Many have 'normal' jobs during the day, then upon their return home make themselves available overnight or during the weekends. Some of our crew respond from their workplaces during the day, and we are very grateful to their employers for releasing them to perform their vital duties.

Anyone over 18 years old can apply (although you can also apply once you are 17½) you must be able to respond and attend the fire station within 5-8 minutes, you have a good standard of physical fitness (i.e. you are generally active), and you must have the right to work in the UK.

Further information on becoming an On Call Firefighter can be found at [www.dwfire.org.uk/working-for-us/on-call-firefighters/](http://www.dwfire.org.uk/working-for-us/on-call-firefighters/) or should you have any questions, you can call **01722 691444**.



## Recent News & Events

### Flooding



Over recent years, we have seen more and more properties affected by flooding during periods of significant rain.

Flooding can be caused by rivers and watercourses overflowing; it can also be caused by drains and culverts being unable to cope with excess surface water on the roads.

Everyone whose home is at risk of flooding should have a plan of what to do if the worst happens.

For information regarding any of the below please refer to:-

<https://www.dwfire.org.uk/safety/flooding/>

- Preparing for a flood
- When flooding starts
- Travelling in flooded areas
- After the flood
- Flooding and your electrics

See also:

- Environment Agency – [www.environment-agency.gov.uk](http://www.environment-agency.gov.uk)
- Government web page – [Floods Destroy](#)
- Electrical Safety First – [www.electricalsafetyfirst.org.uk](http://www.electricalsafetyfirst.org.uk)

### Winter safety



Keeping warm in the winter means using portable heaters, electric blankets or wheat bags – but all of these and the below, carry a fire risk,



- Portable heaters
- Open fires
- Gas fires
- Electric blankets

Please visit <https://www.dwfire.org.uk/safety/safety-at-home/winter-safety/> for further information.

See also:

- The Fire Kills campaign has produced a leaflet on [Fire Safety in the Winter](#).
- There is a wealth of good advice at [www.metoffice.gov.uk/barometer/advice](http://www.metoffice.gov.uk/barometer/advice)

### Advice for carers



If you care for a loved one, or work in the care sector, there is much you can do to help keep the person you care for safe. Please visit <https://www.dwfire.org.uk/safety/advice-for-carers/> for various information and advice.

### Demand

Total Fire Calls for Ludgershall Fire Station for period 01/11/19 to 23/02/20: -

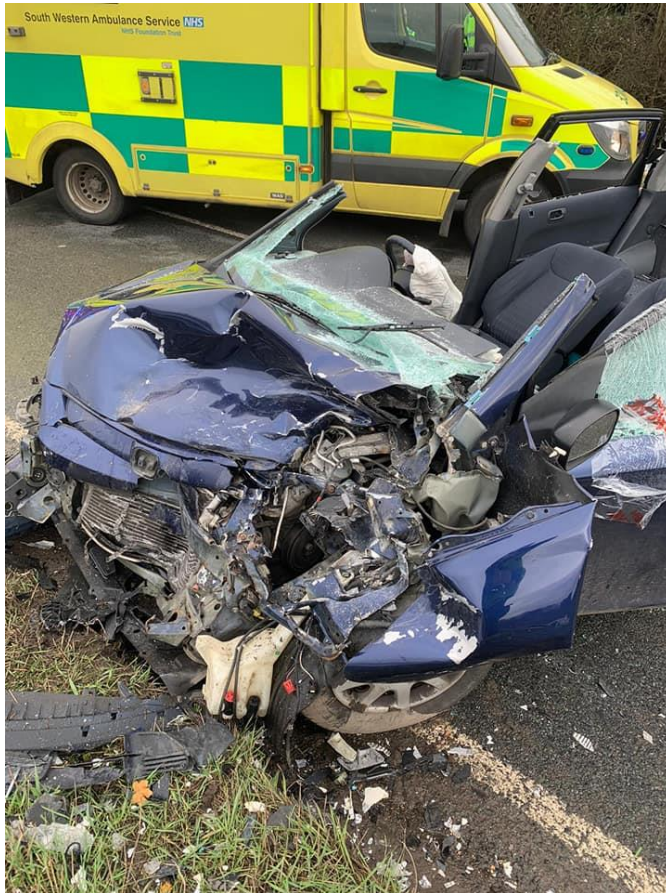
Category	Total Incidents
No. of False Alarms	22
No. of Fires	11
No. of Road Traffic Collisions and other Emergencies	10
<b>Total</b>	<b>43</b>



**DORSET & WILTSHIRE  
FIRE AND RESCUE**

## **Local Incidents of Note**

17/02/20 – Road Traffic Collision, Shipton Belinger



11/01/20 – Nepalese Community Event, Tidworth Theatre.

**Dave Adamson**  
**Station Manager**  
Email: [dave.adamson@dwfire.org.uk](mailto:dave.adamson@dwfire.org.uk)  
Tel: 077344 83892